

Albemarle Road Traffic Calming

April 3, 2023 Public Meeting



neighborwaysdesign



HOWARD STEIN HUDSON

Agenda

- Newton's Transportation Vision
- Project Overview
 - Goals
 - Short Term Actions
 - History
 - Community Design Process
 - Safety Features
- Q&A / Discussion



Newton in Motion

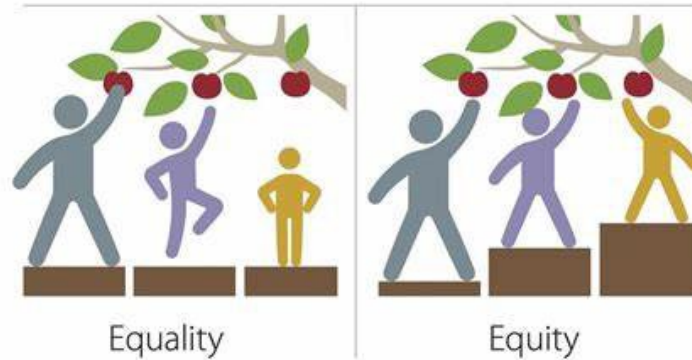
VISION

SAFE | SMART | ACCESSIBLE | LIVABLE | SUSTAINABLE



City of Newton Policies

- Complete Streets
- Safety #1 Priority
- Safe Routes to School (SRTS)
- Equity
- Public Health
- Climate Action Plan



Carbon-neutral by 2050

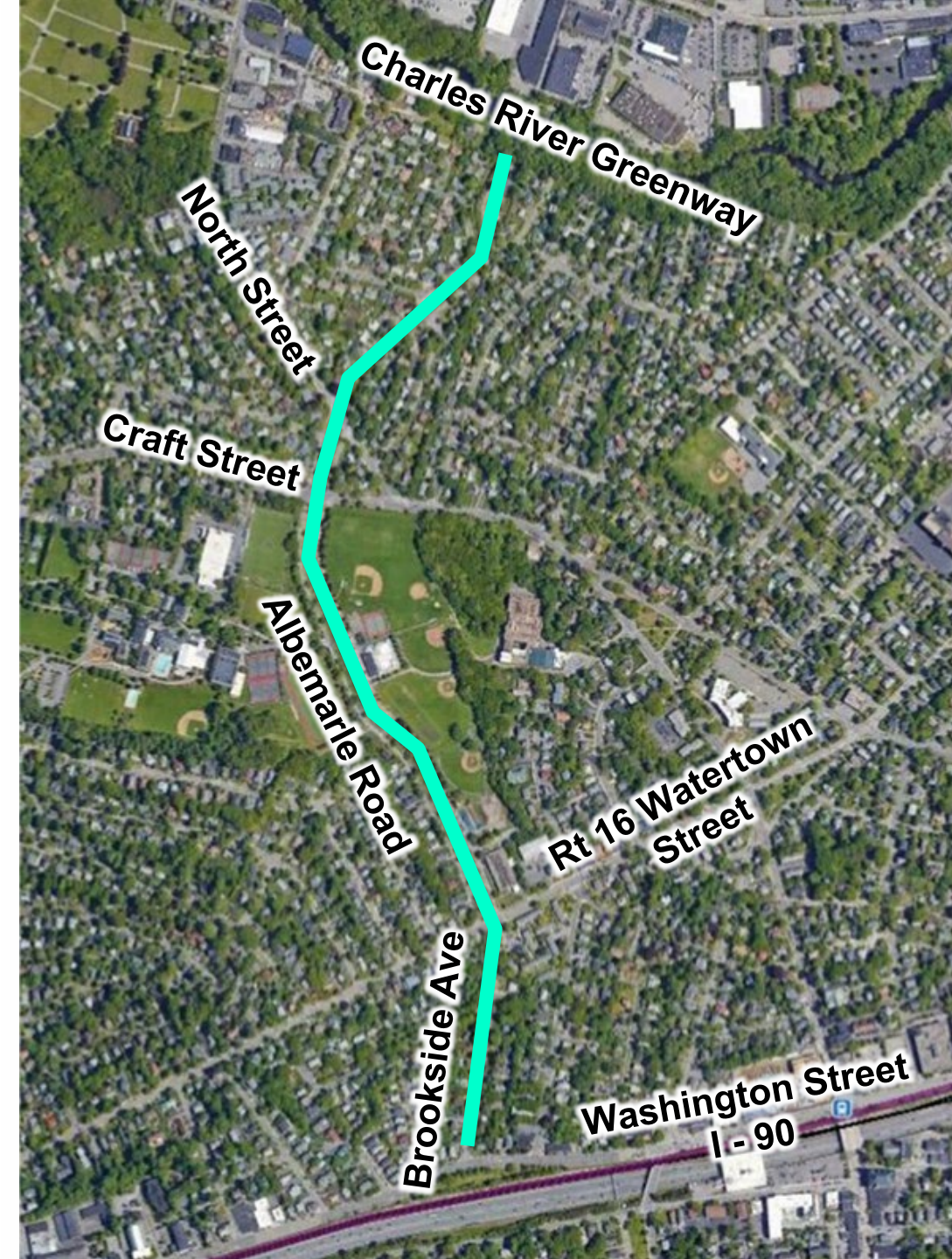


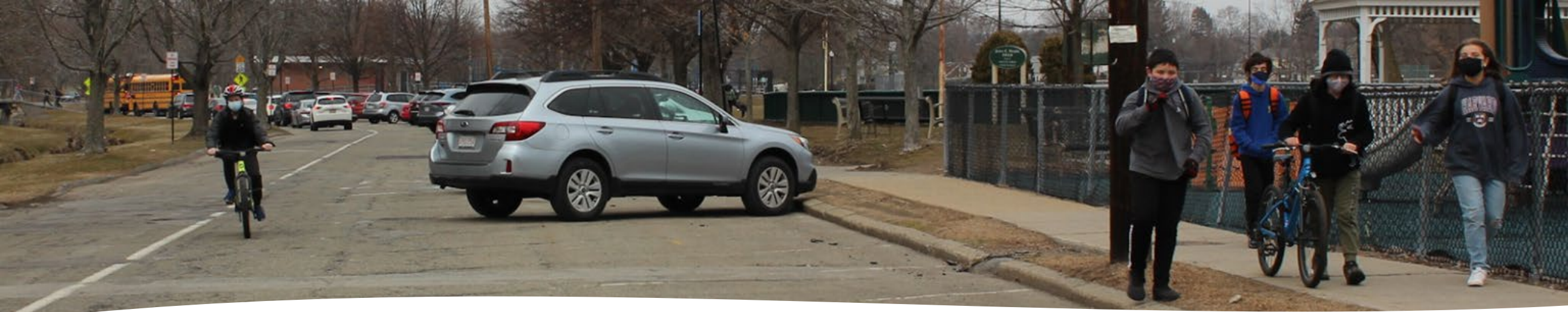
Slower Speeds Save Lives



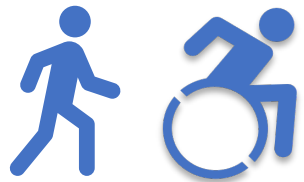
Project Overview

- Limits
 - Brookside Ave / Albemarle Rd from Washington St to Charles River
- Scope
 - Short-term Pilot Project
 - No Construction / Lower Cost
 - \$\$ temporary measures – paint and posts
 - \$\$\$\$ not moving curb lines / no signal work





Project Goals



Increase
safety and
access



Lower traffic
speeds



Reduce
conflicts



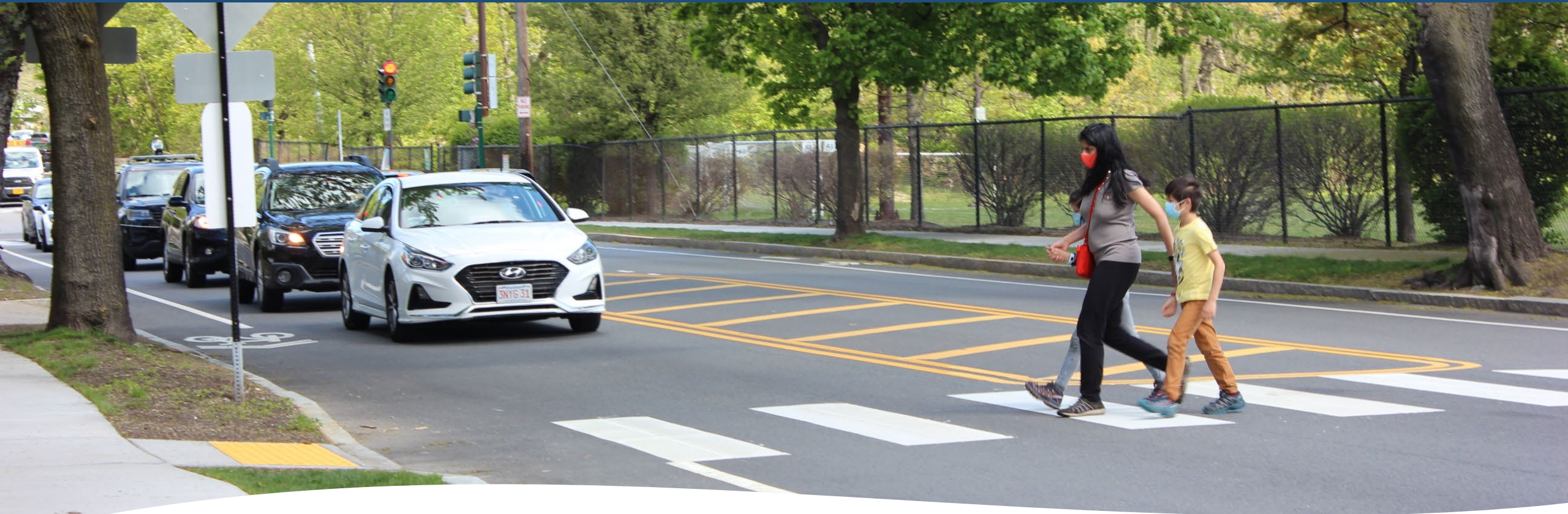
Add bike
lanes

Ongoing Coordination

- Pool Reconstruction
- Permeable Parking Area Albemarle SB @ Crafts
- Bridge Replacement And Accessibility Upgrade
- Field Upgrades
- **SRTS Craft / North / Albemarle Intersection Signalization**



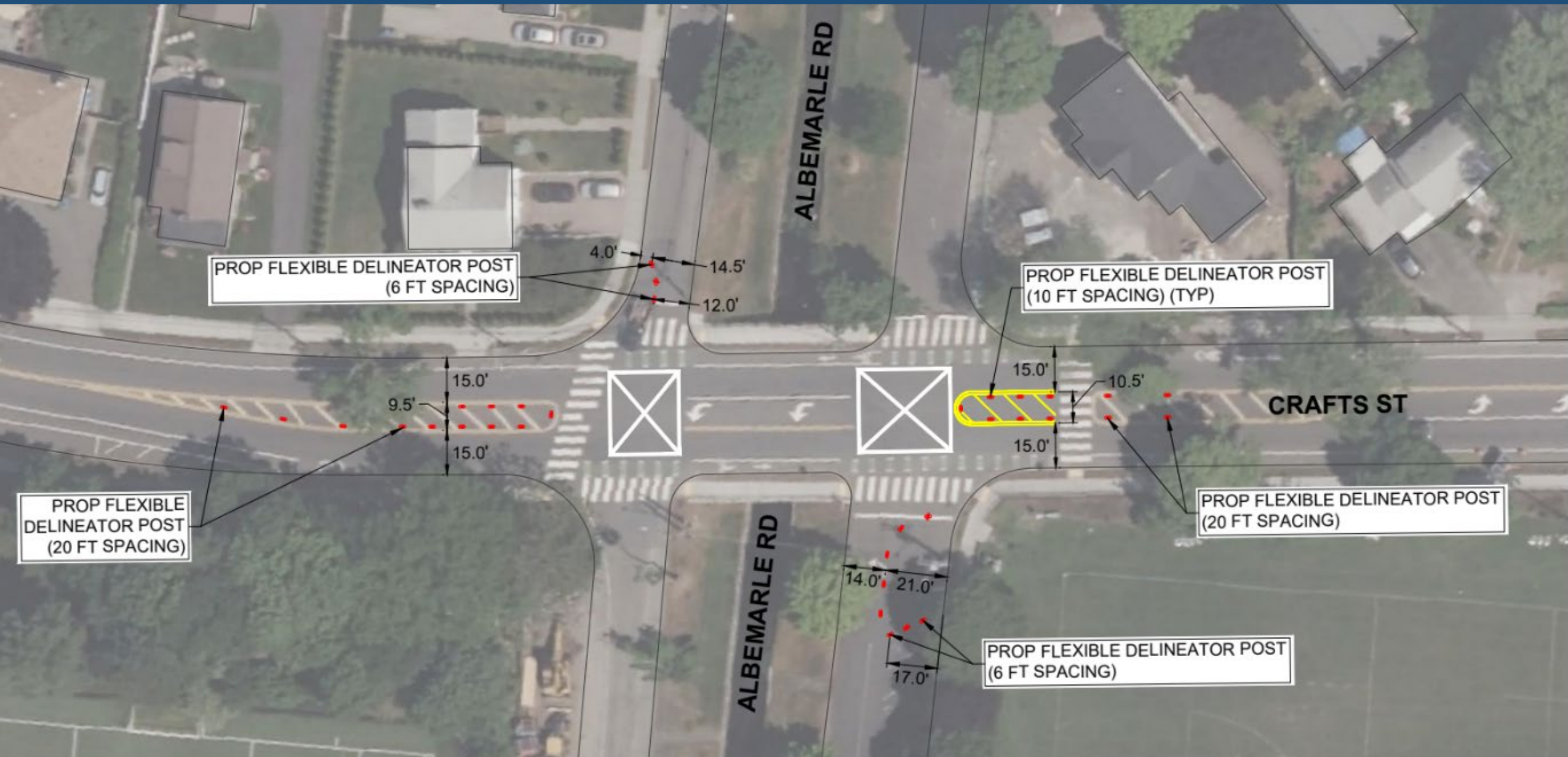
Albemarle / Crafts / North Safety Improvements



- Safe routes to school (SRTS) signal project for 2025
- Recent Friends of Albemarle Letter of Support
- Engineering to install short-term safety improvements this Spring



Spring 2023 Intersection Safety Improvements: Albemarle at Crafts



Project History

Conceptual
Design
2021 – 2022

Last Public
Meeting
March 2022

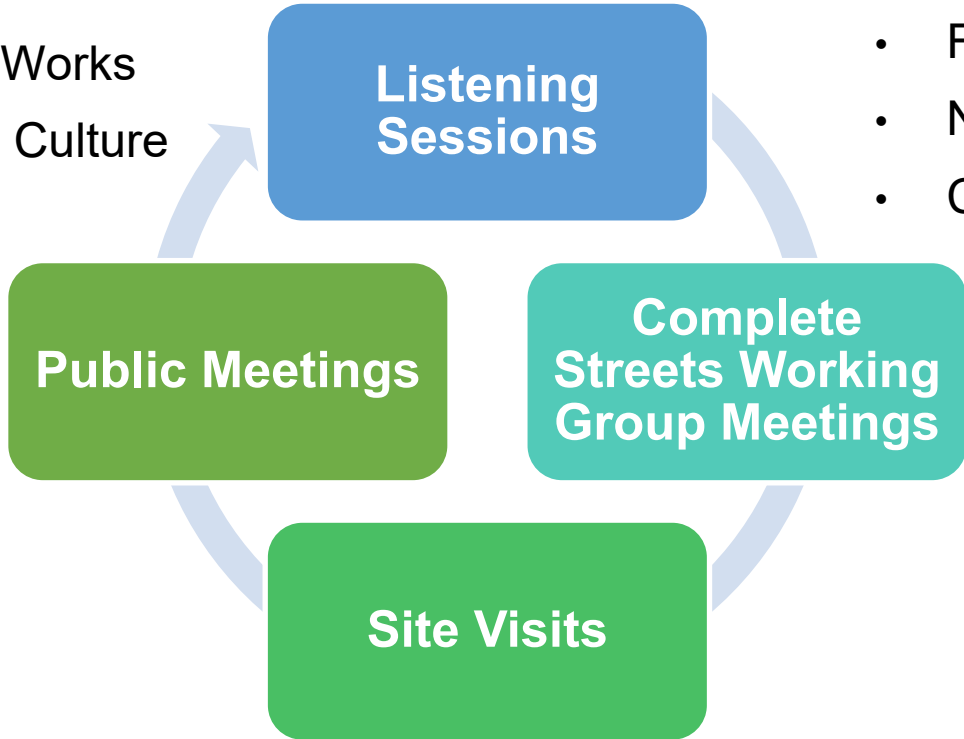
MassDOT
Shared
Streets
Grant 2022

Engineering
Design
Winter -
Spring 2023

Installation
Summer
2023

Engagement Process

- Newton City Councilors
- City Departments
 - Department of Public Works
 - Parks Recreation and Culture
 - Planning
 - Public Buildings
 - ADA Coordinator
- Newton Public Schools
- NECP



- Complete Streets Working Group
- Friends of Albemarle
- Fessenden
- Newton Chinese School
- Charles River Watershed Association
 - Newton Athletic Organizations
 - Transportation Advisory Group
 - Safe Routes to School
 - Bike Newton
 - Boys and Girls Club

Comment Themes

1. High volumes of vulnerable users
2. Speeds
3. Accessibility
4. Pedestrian safety
5. Bicycle safety
6. Bus operations
7. Intersection safety
8. Parking
9. Environmental preservation
10. Placemaking and art



High Volumes Of Vulnerable Users

- Used year round
day and night
weekends and weekdays
- High population of children
- Popular walking and biking route – regional trail access
- Serving as Newton's Athletic complex - more than a park
- 4th of July





Speeds

- Support traffic calming and speed cushions
- Requests for more enforcement



Pedestrian Safety

- People walk in the road
- Need sidewalks on southbound side of Albemarle
- SRTS survey: parents did not want their kids to walk to school because of safety concerns
- People bike on sidewalks
- Flexposts improving safety and visibility
- Improve sight lines at crosswalk approaches
- Restrict people from parking in crosswalks
- Consider rapid flash beacon at Gath Pool crosswalk
- Need signal and crosswalk improvements at Crafts and North
- Need wayfinding signs



Accessibility

- ADA compliance of bridges
- Increase number of bridges across Albemarle
- Maintain / increase existing accessible parking
- Relocate accessible crossing and bridge to Pool entrance

Bicycle Safety

- Desire for safe and accessible bicycle facilities
- Advocacy for protected bicycle lanes
- People biking on sidewalks and in road
- Safety concerns and conflicts with people backing out of head-in parking spaces
- Requests for head-out angle parking to improve safety and sightlines
- Need more bike parking
- Need wayfinding signs



Bus Operations

- F.A Day, Fessenden, and Athletic Programs Buses on Albemarle
- Drivers illegally pass buses during dismissal
- Kids weave between buses
- Improve sight lines at crosswalk
- Close road during dismissal



Parking

- Conflicts / high parking turnover
- Not enough parking
- Shoulder erosion from parking
- Need pickup / drop off
- Need parking map and wayfinding
- Need education and practice for head out angle parking



Intersection Safety

Crafts @ Albemarle

- High crash location
- Northbound traffic forms 2 to 3 lanes in peak – creates multiple conflict points
- Maintain road closure – improving safety, reducing conflicts, more people walking/biking



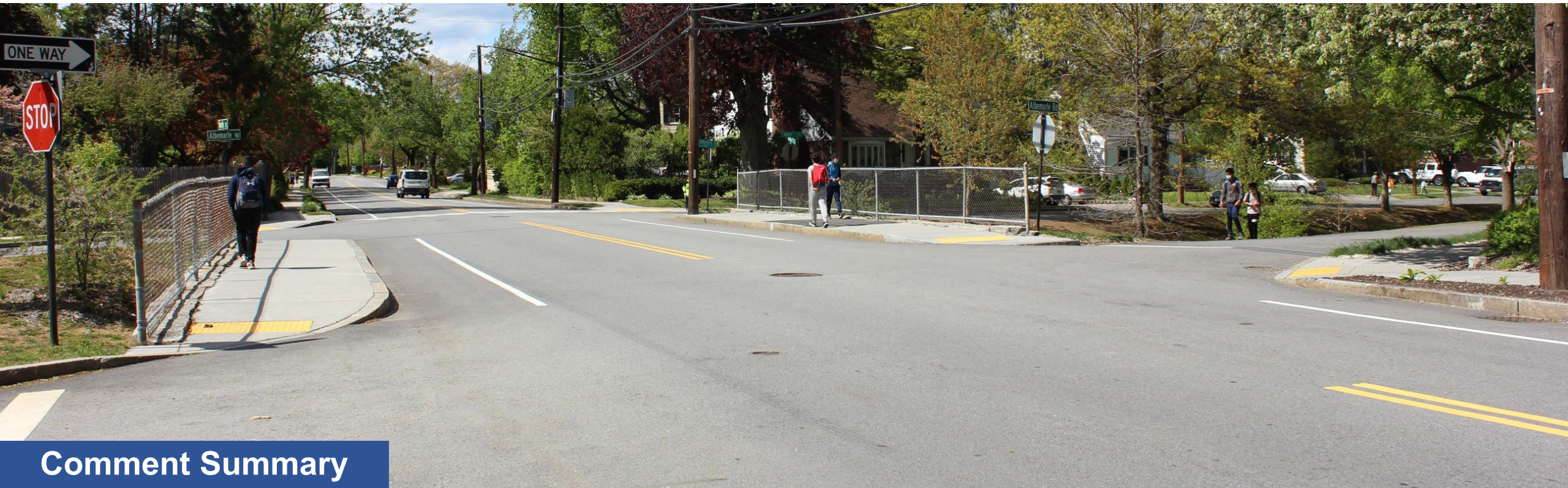
ROAD
CLOSED



North @ Albemarle

- Need signs for two-way traffic
- Shared lane markings
- Resident observed crashes with right turning vehicles from Albemarle to North

Intersection Safety



Environmental Preservation

- Erosion of banks from parking on shoulders
- Educational opportunity – “ditch” to **beloved brook**
- Community concerns to address flooding and runoff
- Consider closing Albemarle southbound to daylight Cheesecake brook (concerns from Fessenden about traffic through school)



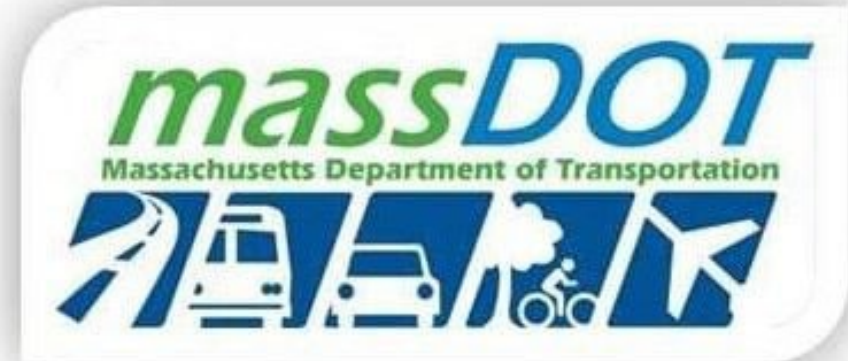
Placemaking and Art

- Water fountain
- Rain gardens / landscaping
- Mural at Gath Pool
- Asphalt murals
- Educational kiosks / signs



2021-2022 Conceptual Design Process

- Many iterations and options
- Three detailed concept options
- Detailed meetings with Schools and Complete Streets Working Group
- Final Concept Design March 2022
- **MassDOT Shared Streets Grant for \$200K to implement in 2023**



Project Timeline

Conceptual
Design
2021 – 2022

Last Public
Meeting
March 2022

MassDOT
Shared
Streets
Grant 2022

Engineering
Design
Winter -
Spring 2023

Installation
Summer
2023

2023 Proposed Safety Features

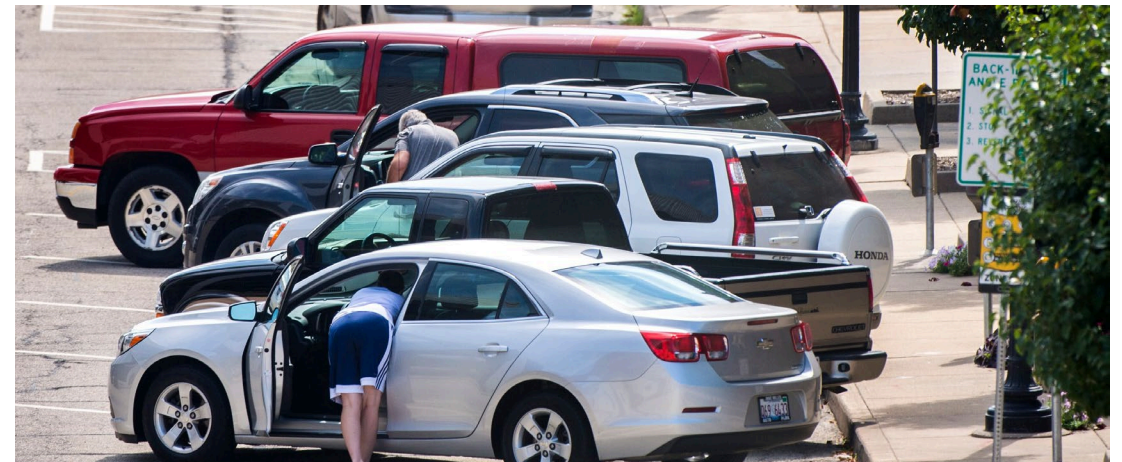
Temporary Speed Cushions

Head-out Angle Parking

Sightline Improvements

Painted Buffered Bike Lanes

Flexposts





Temporary Rubber Speed Cushions

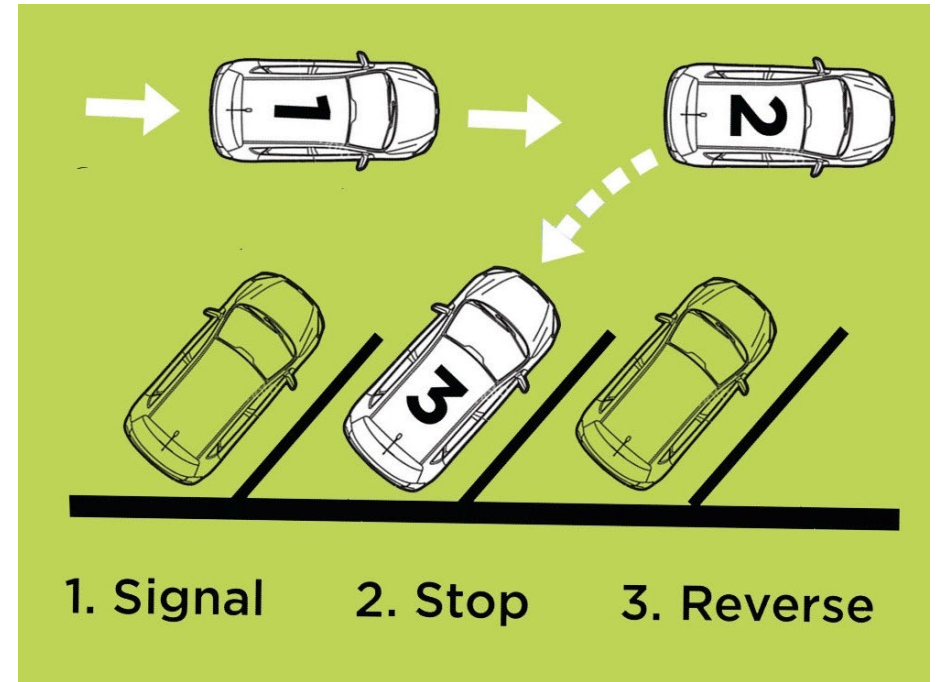


- Like speed humps
- Designed to 20 mph
- Allows emergency vehicles to pass directly over without delay
- Slots too wide for passenger vehicles
- **Temporary Pilot** to be removed in winter

Head-Out Angle Parking

- Like head in angle parking
- Backing up when entering vs exiting
- First step of parallel parking

AAA recommends that
“drivers reverse into parking
spaces whenever possible.”



Head Out Safety Benefits

1. Improved visibility for everyone
2. Back into static space vs moving traffic
3. Vehicle doors shield passengers from traffic and direct them onto the sidewalk
4. Trunk loading on sidewalk vs in travel lane



Source: T. Boulanger, Transportation Services, City of Vancouver, WA.

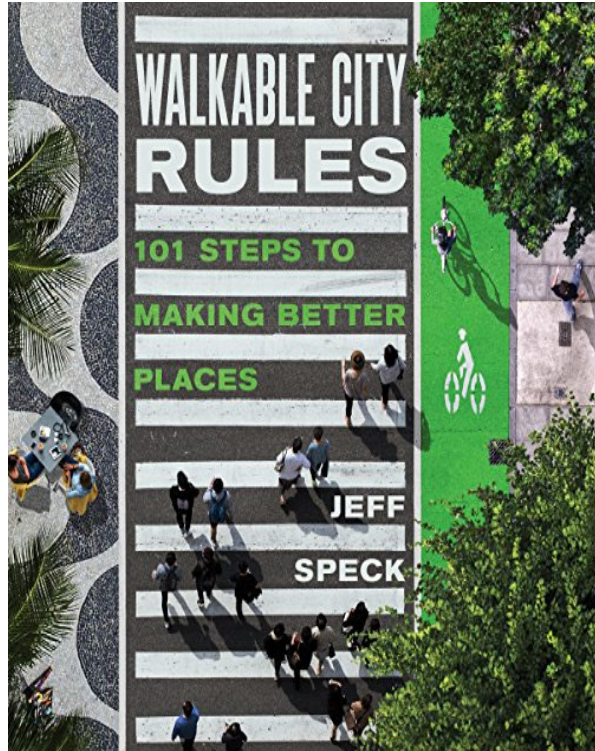


Source: T. Boulanger, Transportation Services, City of Vancouver, WA.



Source: T. Boulanger, Transportation Services, City of Vancouver, WA.

Head Out Parking in Tucson, AZ



Before – Head-in

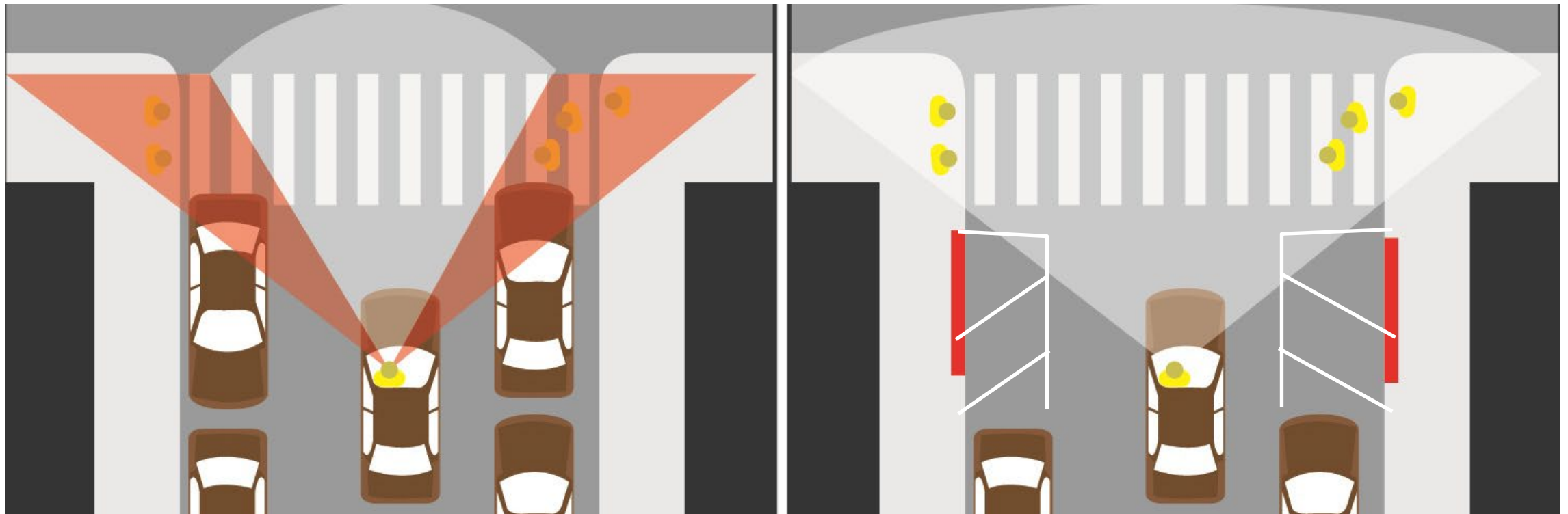
Roughly one car/bicycle crash week

After – Head-out

No crashes in 4 years

Improving Sightlines at Crossings

- Restrict parking on approach to crossings to improve visibility and safety
- Helps to enforce City Laws - no parking within 20' of intersection / on crosswalks



Buffered Bike Lanes

- Separated space for people biking
- Provides visual / painted buffer
- Improves clarity of the safest place to ride



*Left side buffered bike lanes,
Commonwealth Avenue Boston MA*



*Buffered Bike Lane,
Centre St @ Beacon St Newton*

Flexposts

- Provides vertical separation:
 - At crossings and intersections
 - In bicycle lanes
- Used at corners to reduce turning radii while also allowing emergency access



Flexpost and sight line improvement example, Mass Ave Porter Square Safety Improvement Project, Cambridge, MA

Design Overview

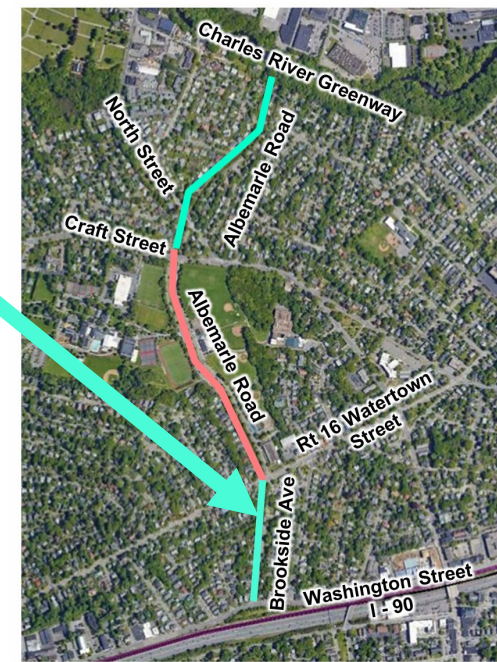


neighborwaysdesign



HOWARD STEIN HUDSON

Brookside Ave



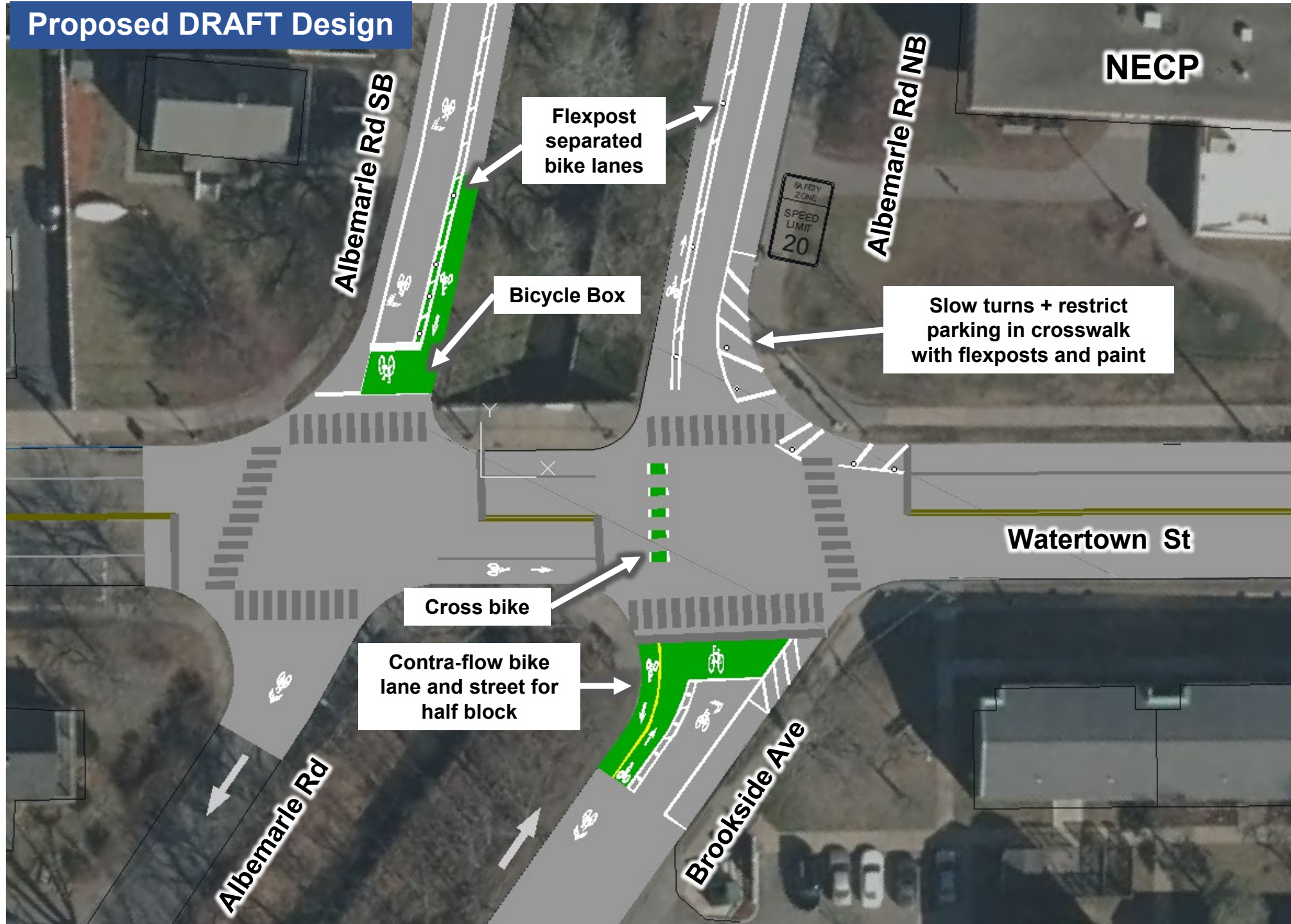
- Neighborhood Greenway
- Sight line improvements @ Washington St
- Slow turns with flexposts and paint at Albemarle Rd
- Two-way bike street for 1 block



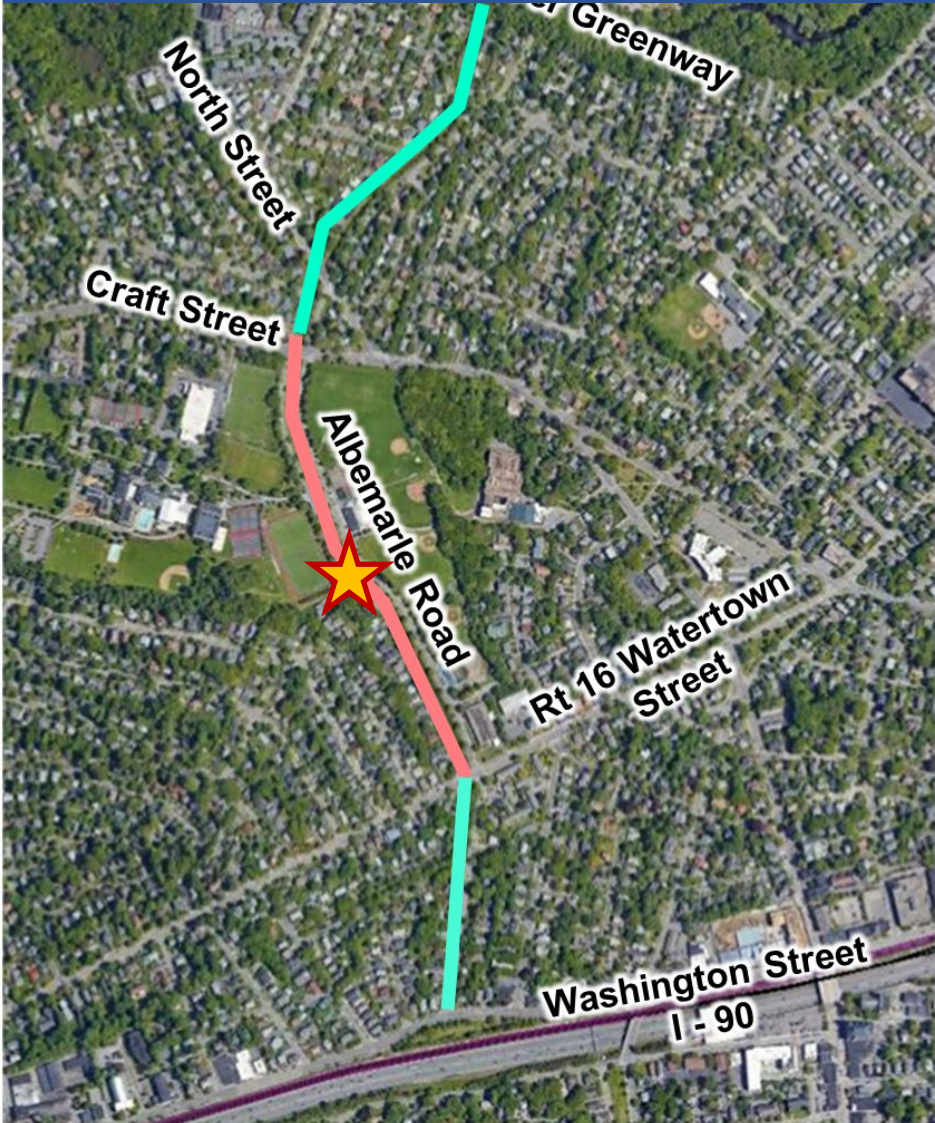
Albemarle @ Watertown St



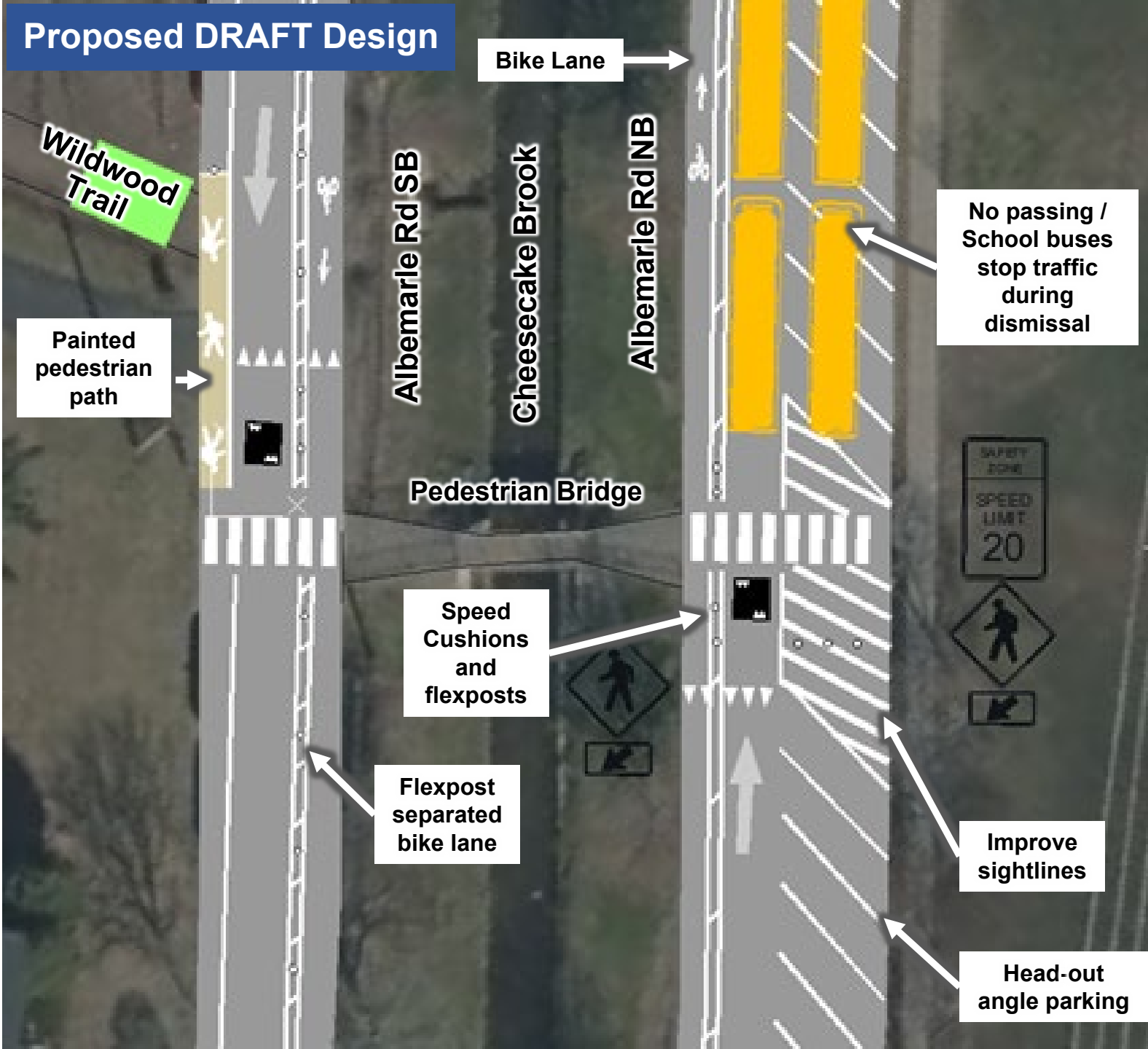
Proposed DRAFT Design



Albemarle Rd between Watertown St and Craft St

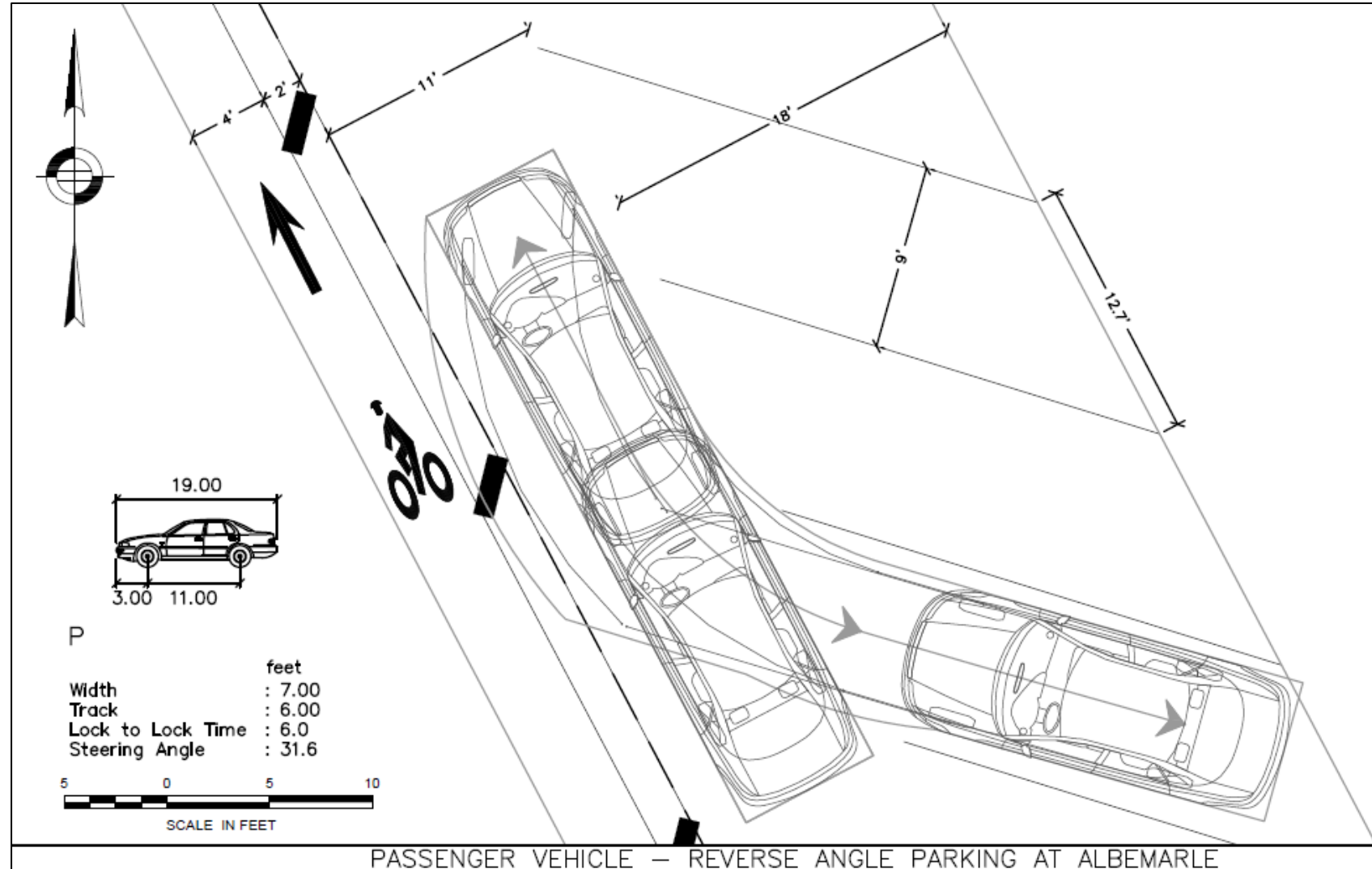


Proposed DRAFT Design



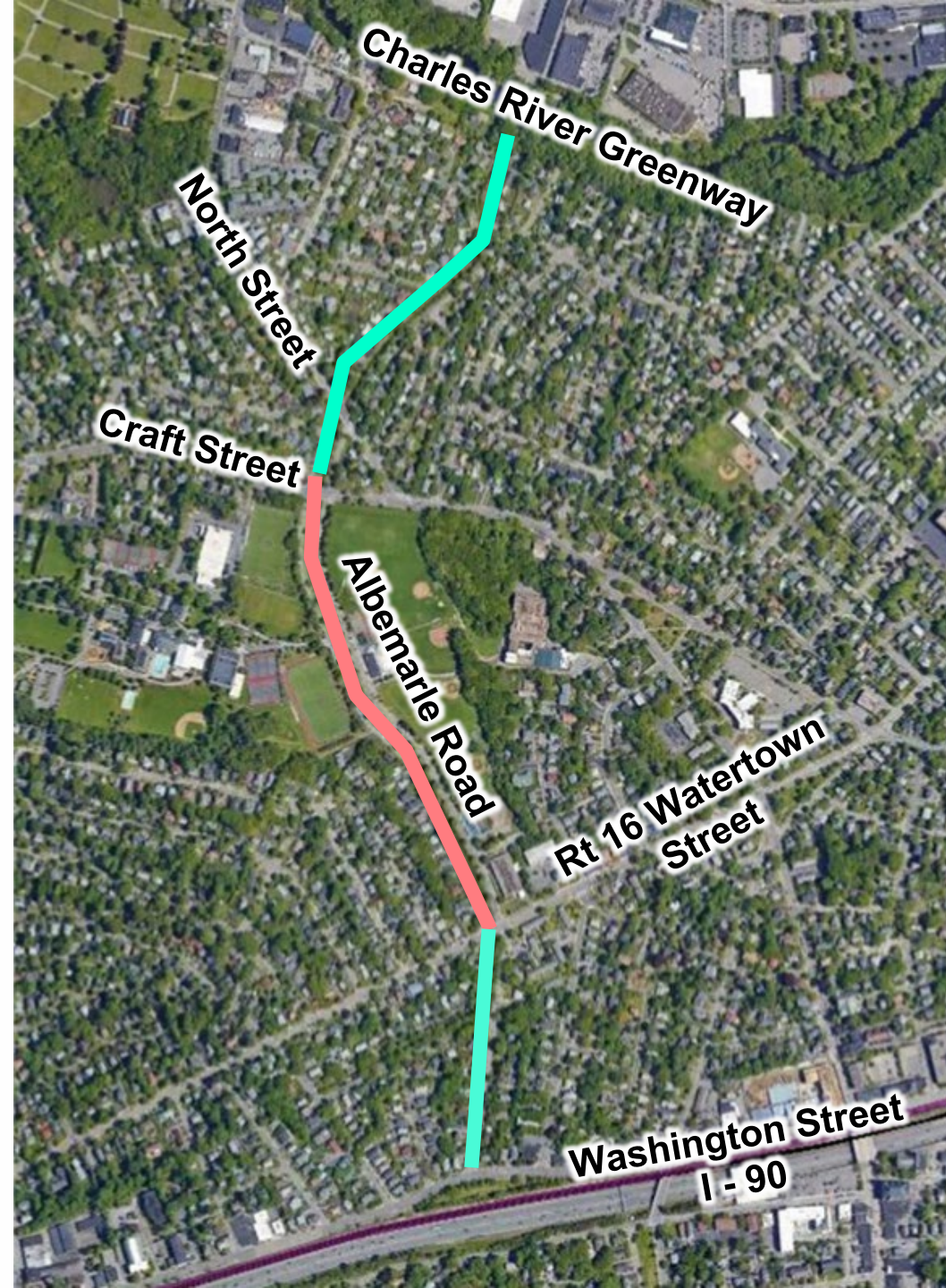
Autoturn Parking Analysis

- **Albemarle NB**
bike lane
- NB flexposts at priority
locations only



Speed Cushions

- Proposed on Albemarle SB and NB on both sides of Cheesecake Brook between Watertown St and Crafts St
- Designed to 20mph
- Spacing ~200 ft to 500 ft max

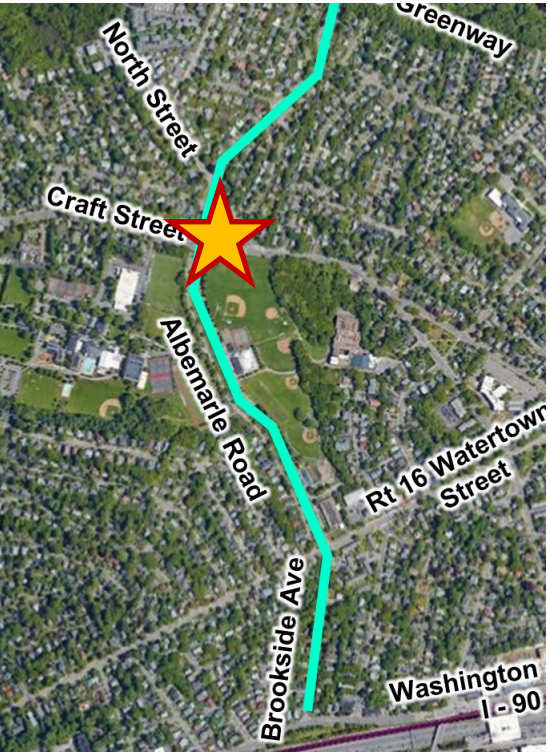


Installation Considerations

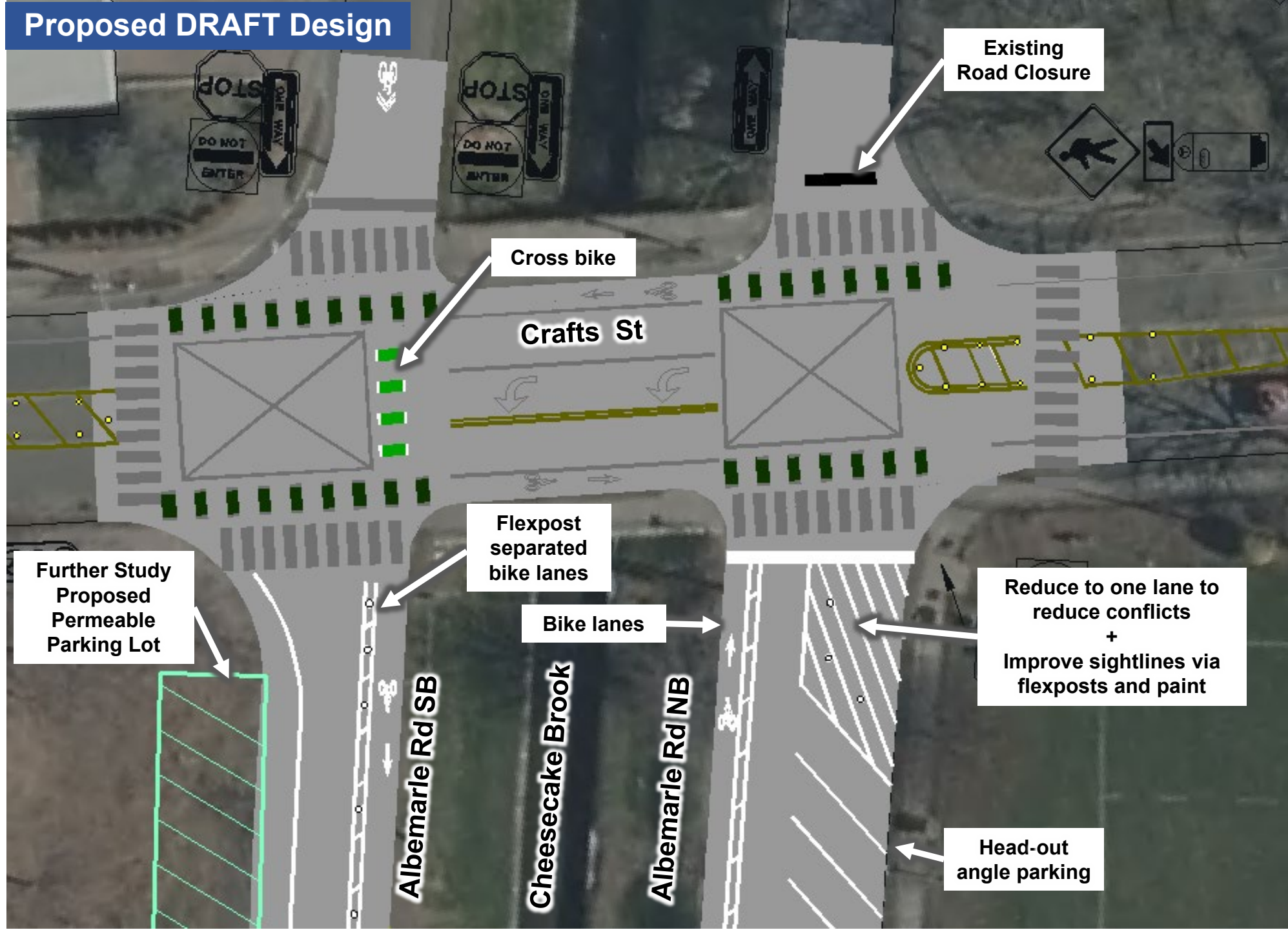
- **Albemarle SB Resurfacing Timeline**
- Poor Pavement Quality
- Paint \$
- Considerations for longer term higher cost improvements (e.g., constructed sidewalks)



Albemarle @ Crafts St



Proposed DRAFT Design



Albemarle Rd North of North Street

Proposed DRAFT Design



Shared Lane
Markings

Slow turns with
flexposts and paint

Albemarle Rd

DRAFT Proposed Pilot Parking Overview

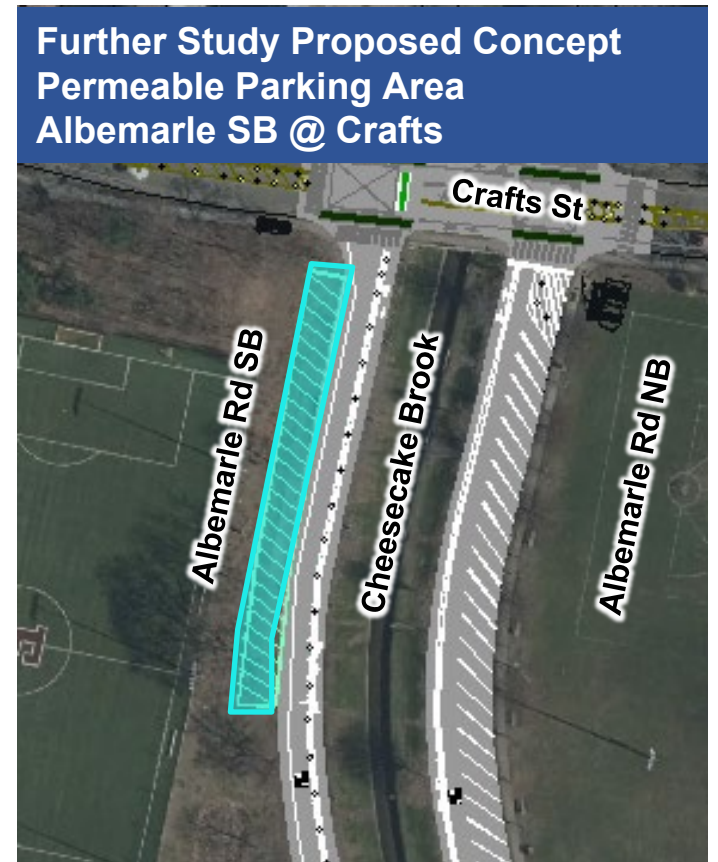
*Proposed Parking changes to Albemarle NB only





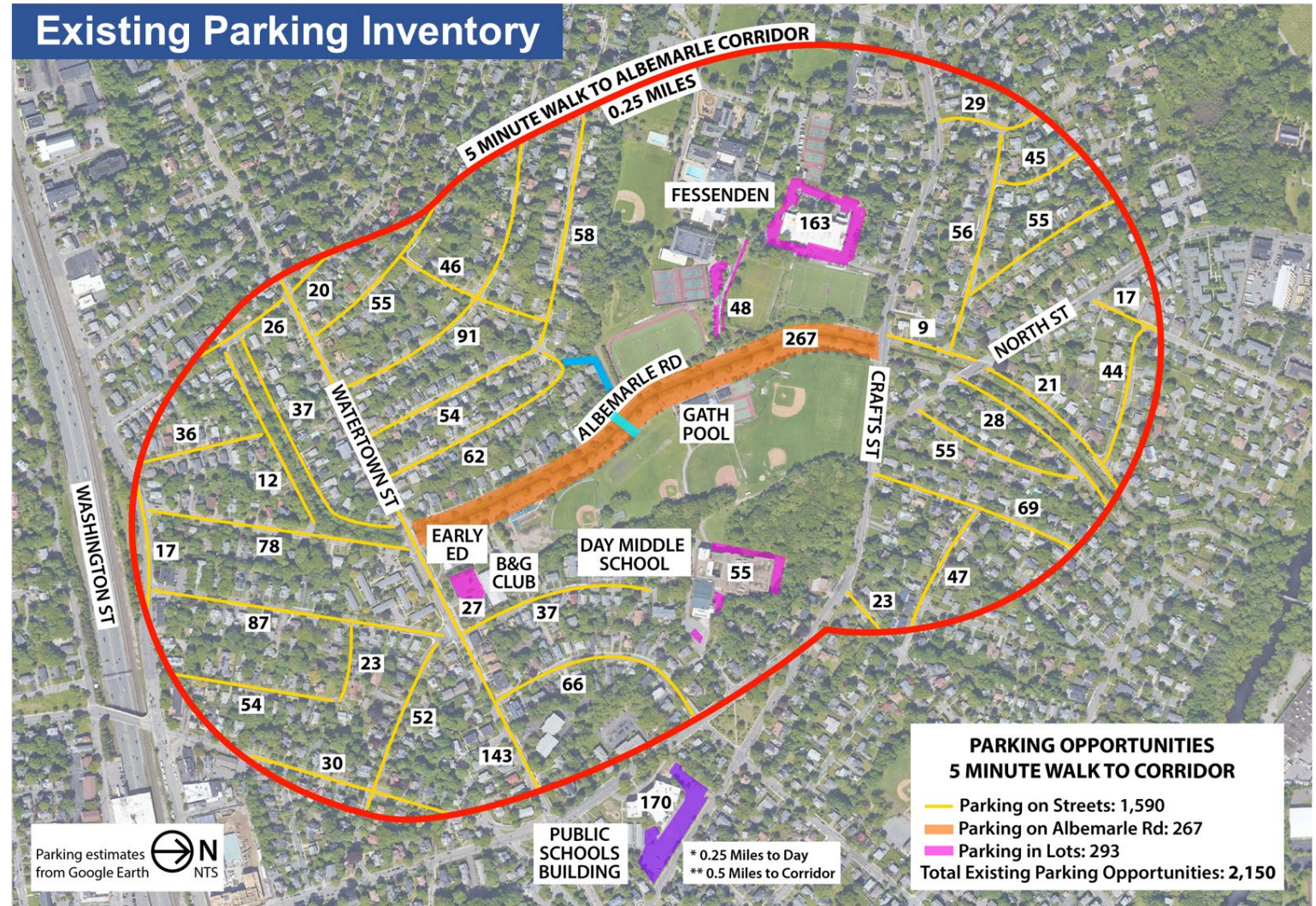
Parking Impacts

- Change in angle + sightline improvements ~ - 23
- Potential future lot ~ + 30



Community Engagement

- Events to practice head-out angle parking
- Multimedia campaign
- Area-wide parking strategy and map
- Work to with schools, athletics, and neighbors



Next Steps

Comments and Feedback
Email: jostroff@newtonma.gov



Public Meeting – Today April 3rd, 2023



Comment Period Closes – April 17th, 2023



Public Facilities Committee – April 19th, 2023



Final Design and Bid Process – Spring 2023



Installation – Estimated August 2023

Discussion / Questions

Comments and Feedback
Email: jostroff@newtonma.gov

Josh Ostroff
City of Newton
Director of Transportation Planning

Jessica Mortell
Neighborways Design
Principal | Sr. Placemaker



neighborwaysdesign

