



PUBLIC INFORMATION MEETING
APRIL 26, 2023



Engineering | Design | Planning | Construction Management

WELCOME!

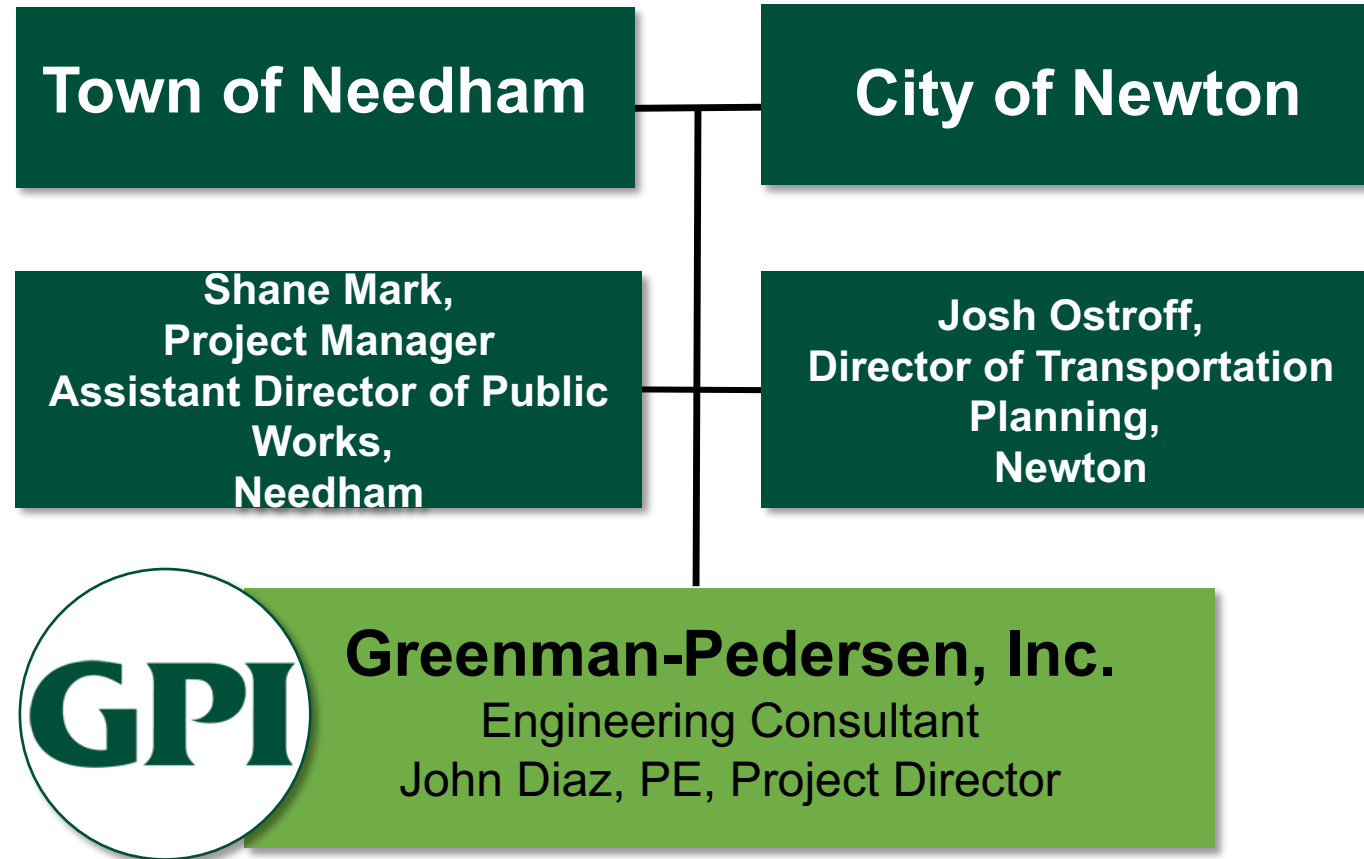
This meeting is being recorded. By continuing to be in the meeting you are consenting to be recorded.

The recording will be posted on the Town of Needham and City of Newton websites:

<http://needhamma.gov/communityway>

<https://www.newtonma.gov/government/planning/transportation-planning/projects/community-way>

1. Welcome and Introductions
2. Scope and Timing of the Feasibility Study
3. Project Area Overview
4. Purpose of the Meeting
5. Community Way Design Considerations
6. Next Steps
7. Questions And Comments



The project is a **feasibility study**:

- for providing a community ‘way’ **between Webster Street in Needham and the Upper Falls Greenway in Newton**
- that will consider a **shared use path** designed to accommodate:
 - **only bicycles and pedestrians** vs.
 - **bicycles, pedestrians & electric shuttle buses**

The feasibility study is funded by a federal grant which defined the study scope. No recommendations will be made.

- **Evaluate and make recommendations** for the design and construction of an **ADA compliant community way/trail** that would link the Needham Heights train station to the Upper Falls Greenway.
 - **Evaluate the entire right-of-way** to ensure that there is **sufficient space for various layout options.**
 - Identify options for **bridge replacement over Route 128.**
 - Identify options for **bridge reuse over the Charles River.**
 - Confirm that the community way could be **sufficiently wide to support safe two-way traffic for pedestrians and bicycles .**
 - Explore the addition of **a way for an electric bus to serve as a shuttle** between the two nodes.
- Recommend any **additional features to enhance the use of the space.**
- Assist in the planning and execution of **community workshops** in both municipalities in support of the project.

The **purpose** of this meeting is two-fold:

- to **inform the public** about the preparation of the feasibility study; and
- to **collect public input** regarding the potential multi-modal use of the corridor.

PROJECT SCHEDULE



PROJECT AREA

Corridor length:
~4,000 feet

Corridor width:
typically 82.5 feet

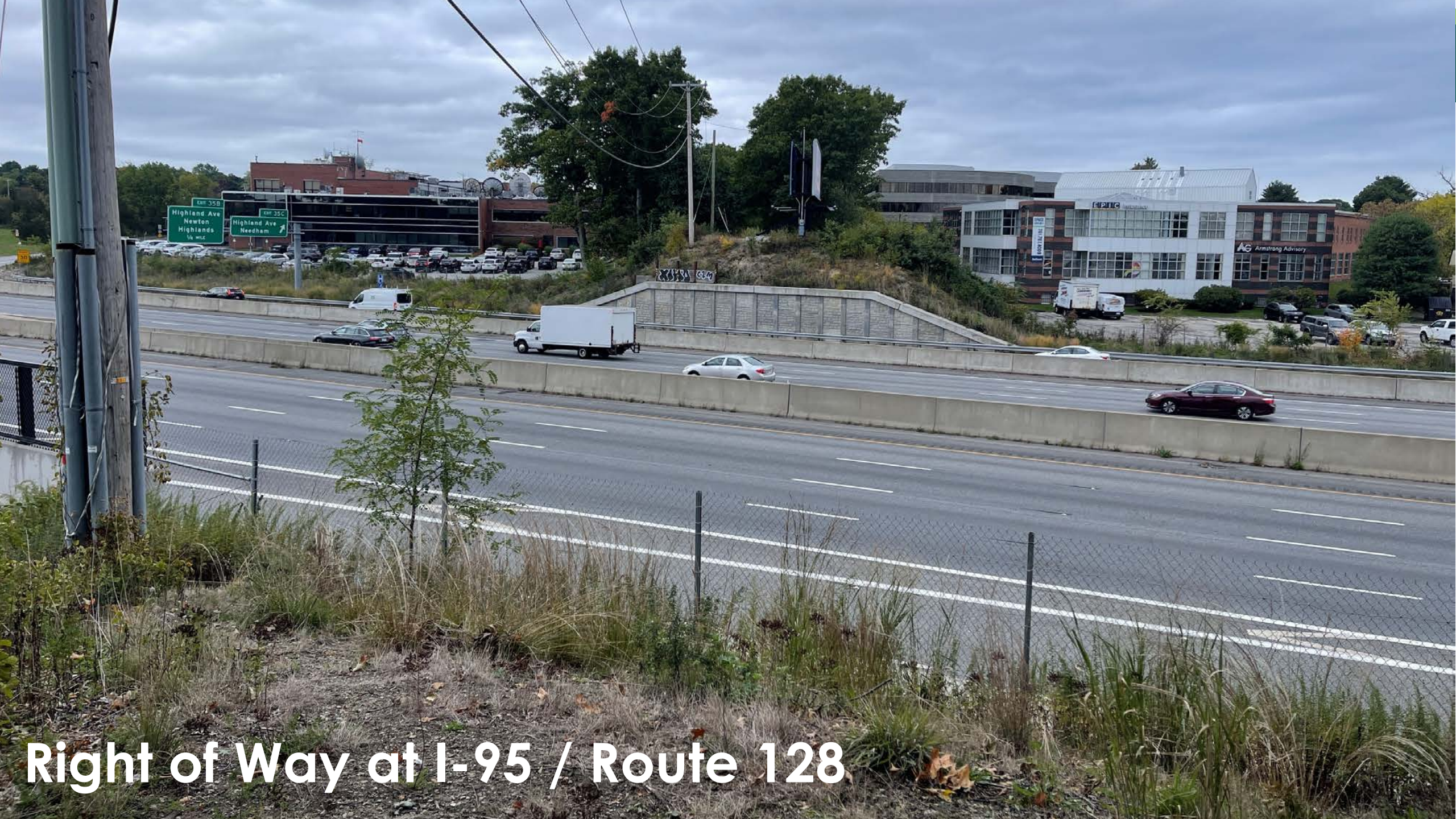




Corridor Conditions - Needham

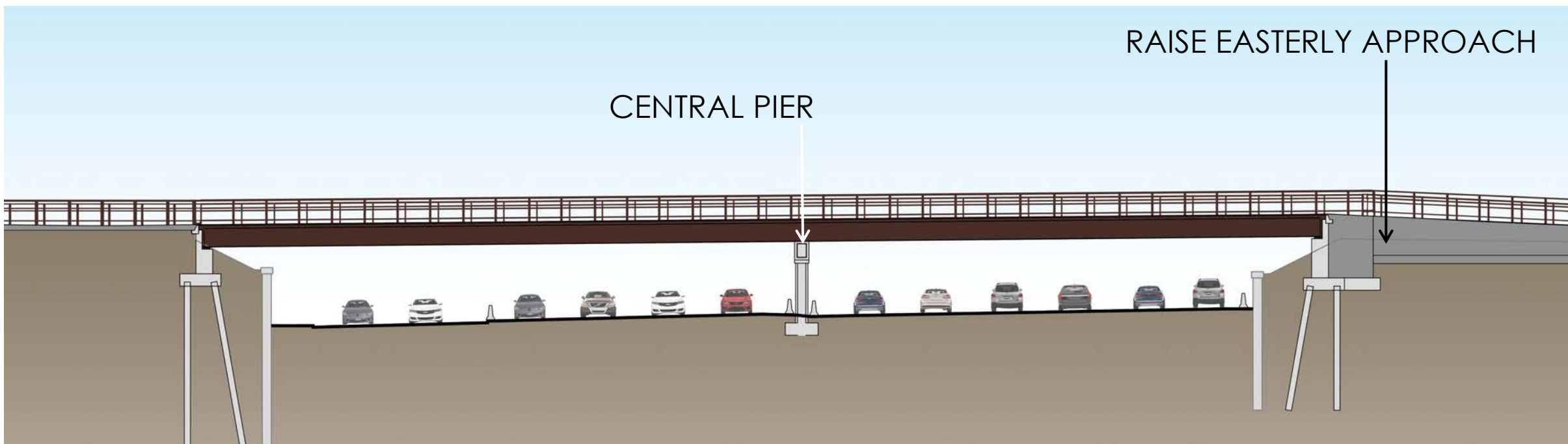


Corridor Conditions - Needham



Right of Way at I-95 / Route 128

I-95 / ROUTE 128 BRIDGE DESIGN CONSIDERATIONS



Easterly approach would need to be **raised** to meet vertical clearance standards for I-95 / Route 128.

Central pier for a two-span bridge structure would require MassDOT / FHWA approval.



← Newton

Needham →

Bridge over the Charles River



GPI

CHARLES RIVER BRIDGE DESIGN CONSIDERATIONS

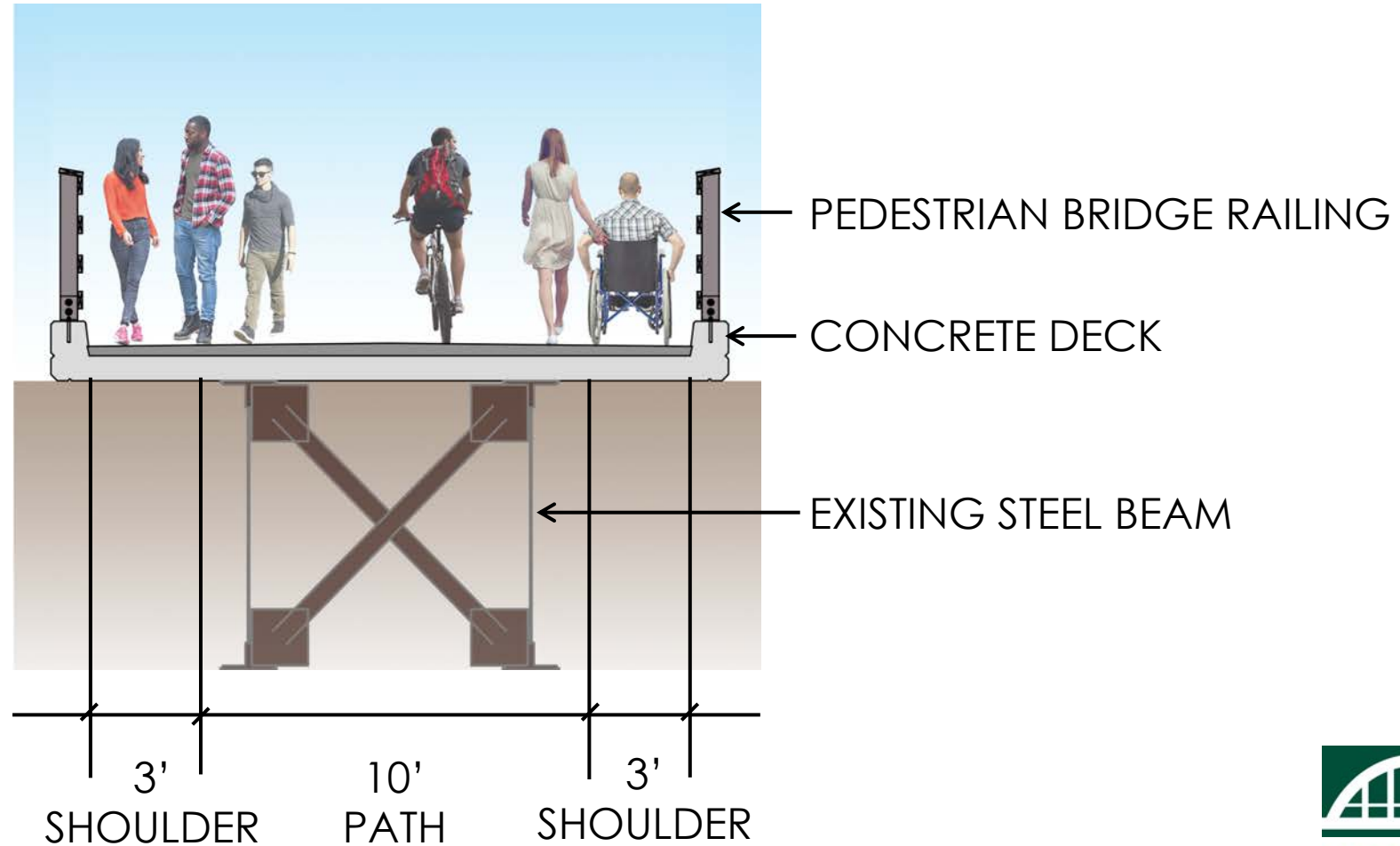
- **Existing structure**: steel stringers on concrete abutments - **satisfactory** condition
- **Deck** needs **replacement** (must be **concrete** for a Shared Use Path)
- **Existing beams**
 - suitable for **pedestrian/cyclist only** path
 - **16-foot useable width maximum**
- **New steel beam and concrete abutment sections are required for a wider bike/pedestrian/transit path**
 - **26-foot usable width maximum**



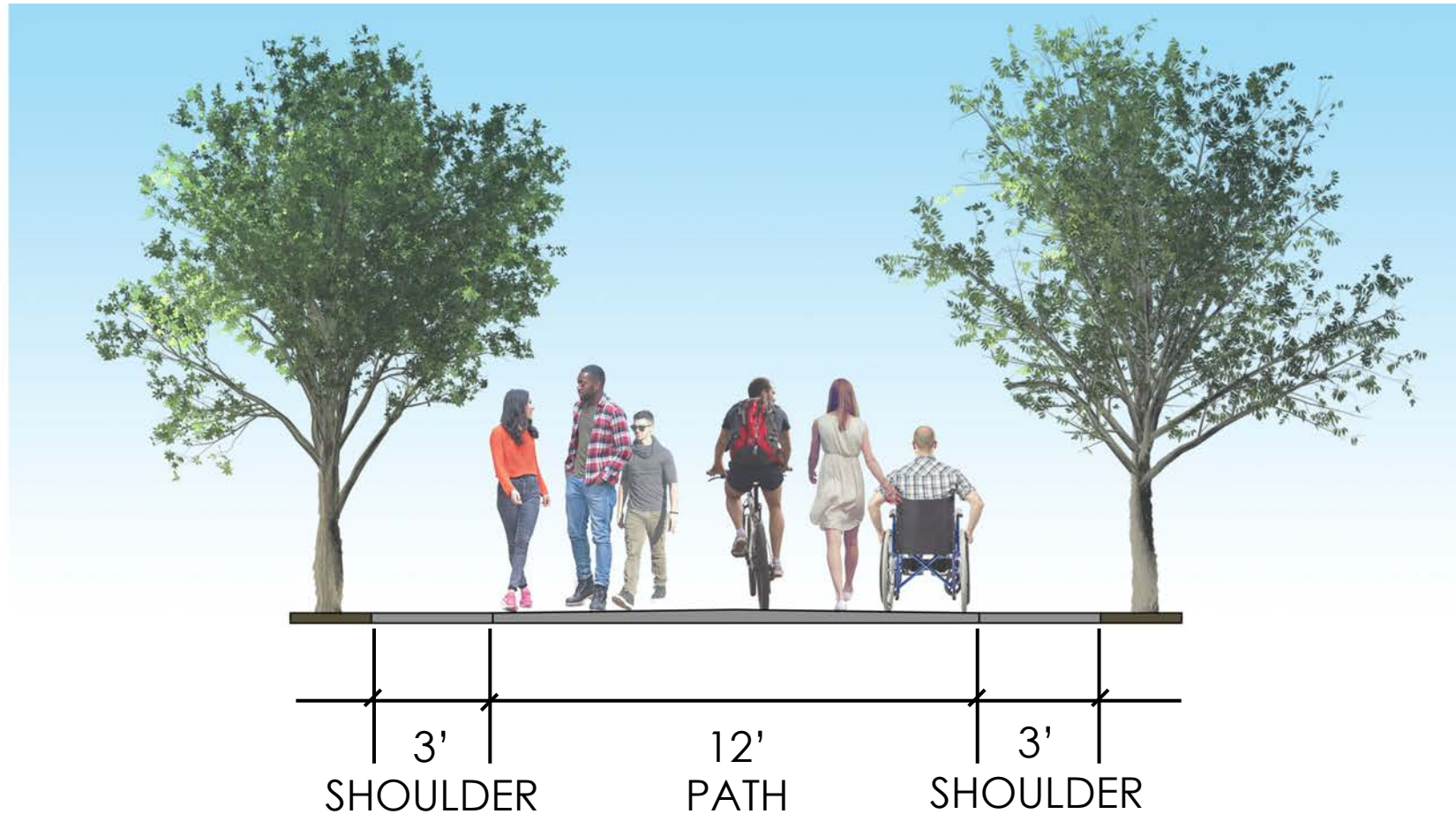
Existing South Substructure

CHARLES RIVER BRIDGE DESIGN OPTION: 16-FEET - PEDESTRIANS / BICYCLES

Maximum path width for **existing substructure on Charles River Bridge**



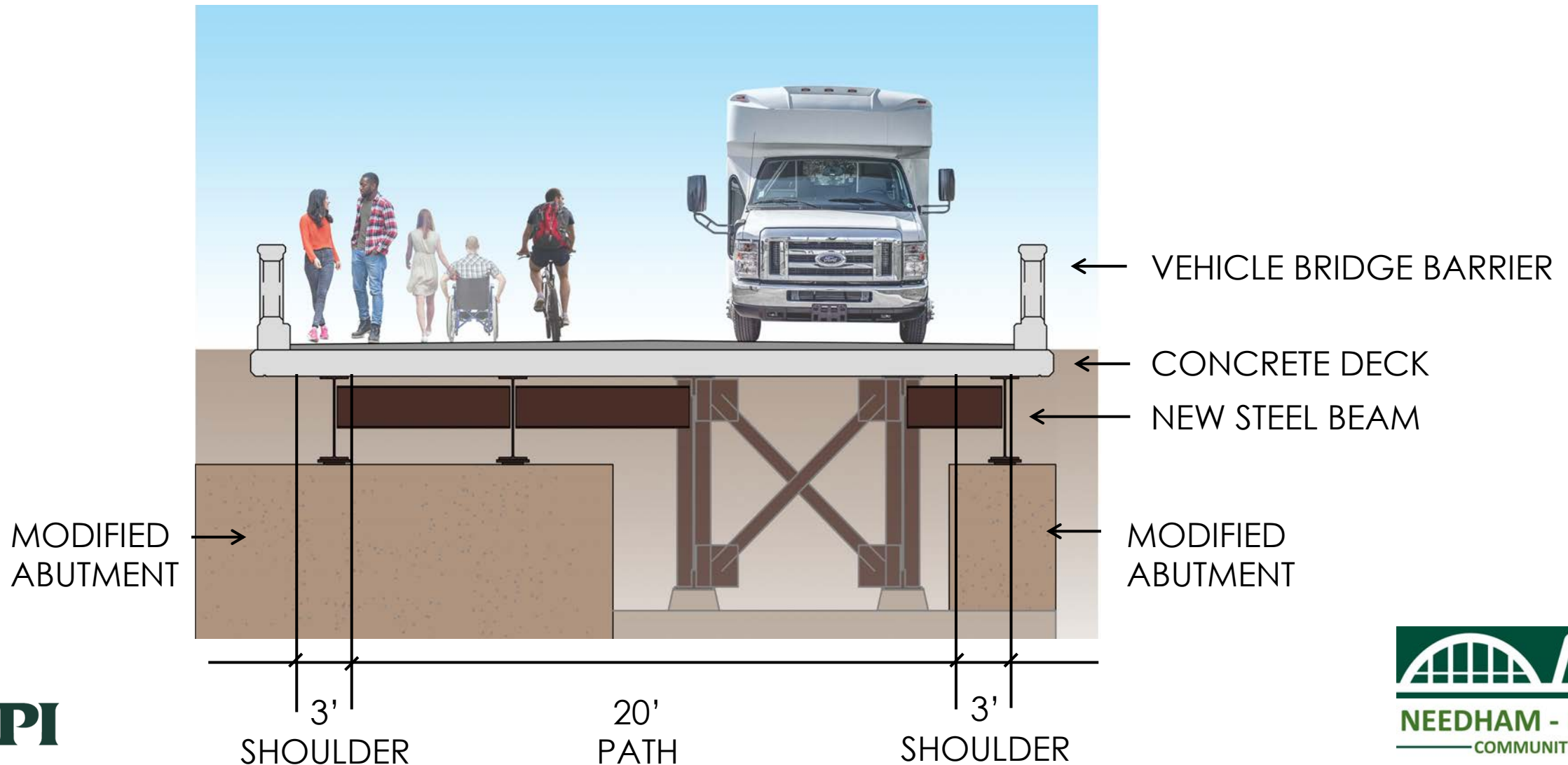
PATH DESIGN OPTION: 18-FEET: PEDESTRIANS / BICYCLES



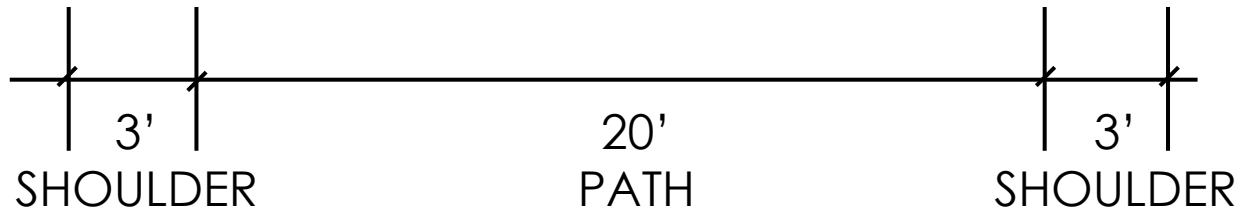
Typical minimum path width – MassDOT Standards
May need exception for narrower bridge from MassDOT

CHARLES RIVER BRIDGE DESIGN OPTION: 26-FEET - PEDESTRIANS / BICYCLES / SHUTTLES

Maximum path width for **expanded substructure** on Charles River Bridge



PATH DESIGN OPTION 26-FEET: PEDESTRIANS / BICYCLES / SHUTTLES



- 1. Continue Feasibility Study of Community Way**
 - Develop Design Alternatives
 - Prepare Cost Estimates
- 2. Review Public Input**
- 3. Present Feasibility Study Findings at Community Meeting #2 - June 2023 (date to be determined)**

We would like your input!

Online survey link:

<https://forms.office.com/r/B0dkVpcDNb>



Survey Open Until April 30th



Thank You!

Questions and Comments

GPI